



MetroWest+

Portishead Branch Line (MetroWest Phase 1)

TR040011

Applicant: North Somerset District Council

2.49 to 2.51 - Sheepway Bridge Maintenance Compound and Interim Access Arrangements

**The Infrastructure Planning (Applications: Prescribed Forms and Procedure) Regulations 2009, regulation 5(2)(o)
Planning Act 2008**

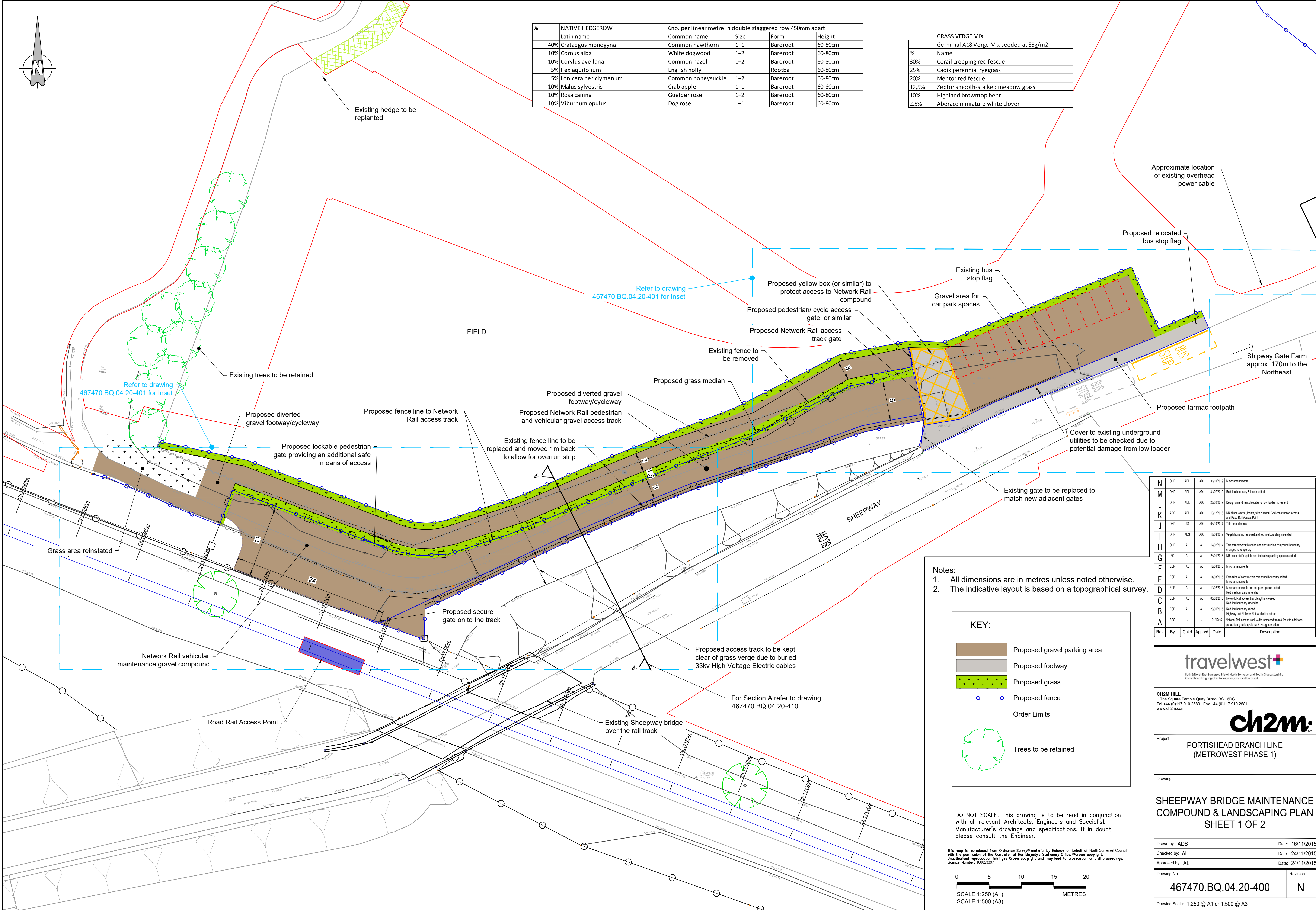
Author: CH2M

Date: November 2019



Document Index

2.49	Sheepway Bridge Maintenance compound and Landscaping Plan	The Infrastructure Planning (Applications: Prescribed Forms and Procedure) Regulations 2009, regulation 5(2)(o)	467470.BQ.04.20-400 - 401 Rev N
2.50	Sheepway Bridge Compound Interim Access Arrangements	The Infrastructure Planning (Applications: Prescribed Forms and Procedure) Regulations 2009, regulation 5(2)(o)	467470.BQ.04.20-404 Rev C
2.51	Sheepway Bridge Southern Interim Access Arrangements	The Infrastructure Planning (Applications: Prescribed Forms and Procedure) Regulations 2009, regulation 5(2)(o)	467470.BQ.04.20-405 Rev D



GRASS VERGE MIX	
	Geminal A18 Verge Mix seeded at 35g/m2
%	Name
30%	Coral creeping red fescue
25%	Cadix perennial ryegrass
20%	Mentor red fescue
12,5%	Zeptor smooth-stalked meadow grass
10%	Highland browntop bent
2,5%	Aberace miniature white clover

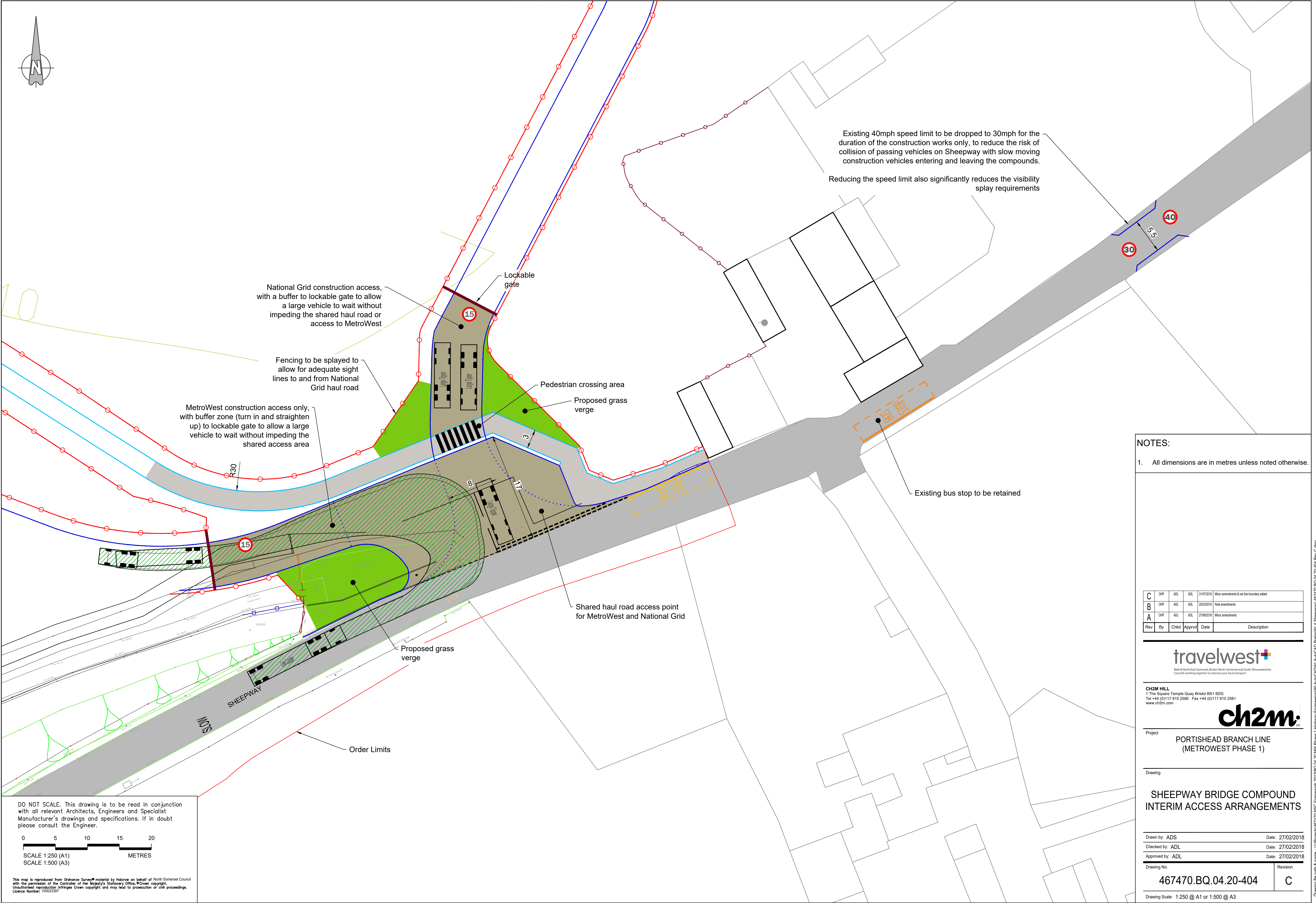
travelwest 

Bath & North East Somerset, Bristol, North Somerset and South Gloucestershire
Councils working together to improve your local transport

ch2m.SM

Drawing No.	Revision
467470.BQ.04.20-400	N

Drawing Scale: 1:250 @ A1 or 1:500 @ A3



NOTES:

1. All dimensions are in metres unless noted otherwise.

C	CHP	ADL	ADL	31/07/2018	Minor amendments & red line boundary added
B	CHP	ADL	ADL	25/03/2018	Note amendments
A	CHP	ADL	ADL	27/09/2018	Minor amendments
Rev	By	Chkd	Apprvd	Date	Description

travelwest
Bath & North East Somerset, Bristol, North Somerset and South Gloucestershire
Councils working together to improve your local transport

CH2M HILL
1 The Square Temple Quay Bristol BS1 6DG
Tel +44 (0)117 910 2580 Fax +44 (0)117 910 2581
www.ch2m.com

ch2m

Project
**PORTISHEAD BRANCH LINE
(METROWEST PHASE 1)**

Drawing

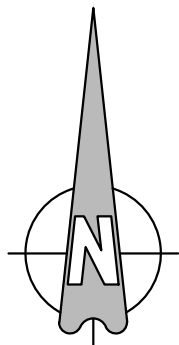
**SHEEPWAY BRIDGE COMPOUND
INTERIM ACCESS ARRANGEMENTS**

Drawn by: ADS Date: 27/02/2018
Checked by: ADL Date: 27/02/2018
Approved by: ADL Date: 27/02/2018

Drawing No. 467470.BQ.04.20-404
Revision C

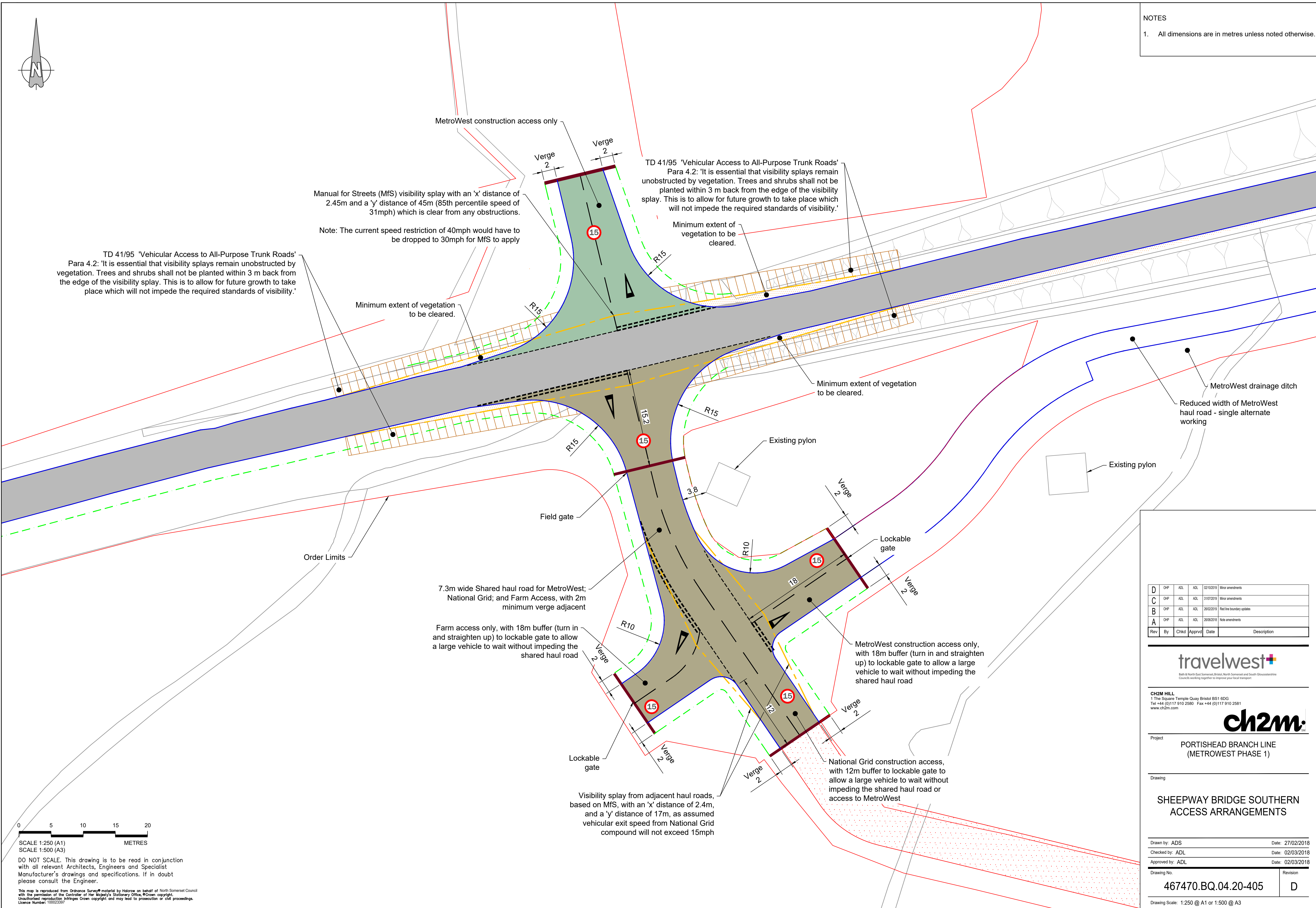
Drawing Scale: 1:250 @ A1 or 1:500 @ A3

Drawing file path & name: I:\Projects\467470 NSC Framework\2018\BQ.04.20 MW Phase 1 Highway Engineering\BQ.04.20 MW Phase 1 Highway Engineering\BQ.04.20-404 Rev. C.dwg



NOTES

1. All dimensions are in metres unless noted otherwise.



0 5 10 15 20
SCALE 1:250 (A1)
SCALE 1:500 (A3)
METRES

DO NOT SCALE. This drawing is to be read in conjunction with all relevant Architects, Engineers and Specialist Manufacturer's drawings and specifications. If in doubt please consult the Engineer.

This map is reproduced from Ordnance Survey® material by Halcom on behalf of North Somerset Council with the permission of the Controller of Her Majesty's Stationery Office. © Crown copyright. Unauthorised reproduction infringes Crown copyright and may lead to prosecution or civil proceedings. Licence Number: 100023597

D	CHP	ADL	ADL	02/10/2019	Minor amendments
C	CHP	ADL	ADL	31/07/2019	Minor amendments
B	CHP	ADL	ADL	28/02/2019	Red line boundary updates
A	CHP	ADL	ADL	28/09/2018	Note amendments
Rev	By	Chkd	Apprvd	Date	Description

travelwest

Bath & North East Somerset, Bristol, North Somerset and South Gloucestershire
Councils working together to improve your local transport

CH2M HILL
1 The Square Temple Quay Bristol BS1 6DG
Tel +44 (0)117 910 2580 Fax +44 (0)117 910 2581
www.ch2m.com

ch2m

Project
PORTISHEAD BRANCH LINE
(METROWEST PHASE 1)

Drawing

SHEEPWAY BRIDGE SOUTHERN
ACCESS ARRANGEMENTS

Drawn by: ADS Date: 27/02/2018

Checked by: ADL Date: 02/03/2018

Approved by: ADL Date: 02/03/2018

Drawing No. Revision

467470.BQ.04.20-405

D

Drawing Scale: 1:250 @ A1 or 1:500 @ A3

Drawing file path & name: I:\Projects\467470 NSC Framework 2018\BQ.04.20 MW Phase 1 Highway Engineering\BQ.04.20-405 AutoCAD Final\BQ.04.20-405 & 406 Rev D.dwg